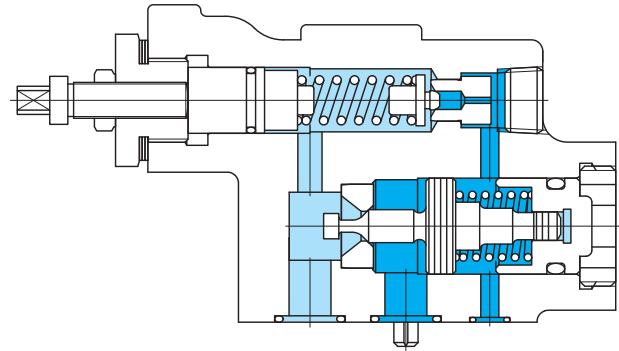
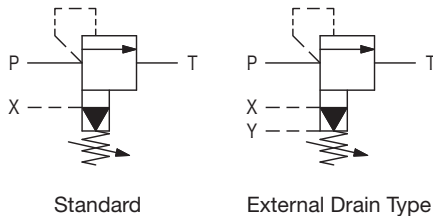


Balance Piston type Relief valves

CG-03



Functional Symbols



Model Code

(F3)-CG-03-B(V)(Y)-15-(S81)-JA-(J)

1

2

3

4

5

6

7

8

9

1 Hydraulic fluid

Omit: mineral oil based fluid, water-glycol based fluid
F3: phosphate ester fluid

2 Relief valve

CG: gasket mounting

3 Size: Refer to "Specifications".

4 Max. adjustable pressure: Refer to "Specifications".

5 Vent pressure

Omit: low vent pressure (standard)
V: high vent pressure

6 Drain

Omit: internal drain (standard)
Y: external drain

7 Design no.

8 Adjuster

Omit: sq. head adjustment screw
S81: handwheel

9 Control code

J entered for the external drain type

Specifications

Model Code	Size	Max. Working Pressure MPa	Max. Flow L/min	Max. Adjustable Pressure MPa	Weight kg
CG-03	03	21	40	B(V) : 7 C(V) : 14 F(V) : 21	3.0

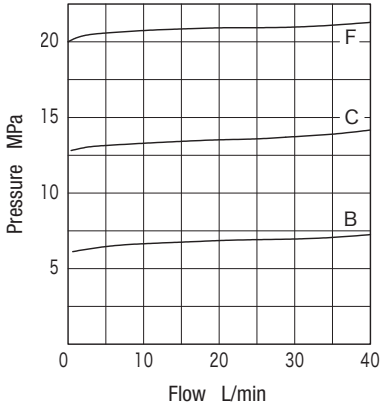
Note: Minimum adjustable pressure will differ with flow. See characteristics curves for reference.

Notes on Operation

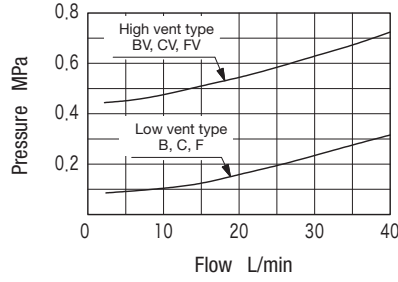
- Use external drain type (Y) in cases of high tank line pressure or large pressure fluctuations and connect drain line directly to tank. Ensure that end of the piping is always below the fluid level.
- For faster unload to onload response, use high vent pressure type (V).
- When setting the pressure, pay attention to the flow – pressure characteristics.
- If a pressure adjustment handle needs to be provided, indicate "S81" after the design number.
- Loosen the lock nut and turn handle clockwise to increase the setting pressure and counterclockwise to decrease the setting pressure.

Characteristics Curve (at 20 mm²/s) (typical examples)

● Flow-Pressure Characteristics



● Flow-Minimum Adjustable Pressure Characteristics



Mounting Bolts (JIS B 1176, Strength Class 12.9)

Valve Model	Hex Socket Bolts		Qty
	Metric Thread	Unified Thread	
CG-03	M12×55	1/2-13UNC×57.1	4

- Mounting bolts must be ordered separately.
- Tightening torque of mounting bolts: 72 to 88 N·m

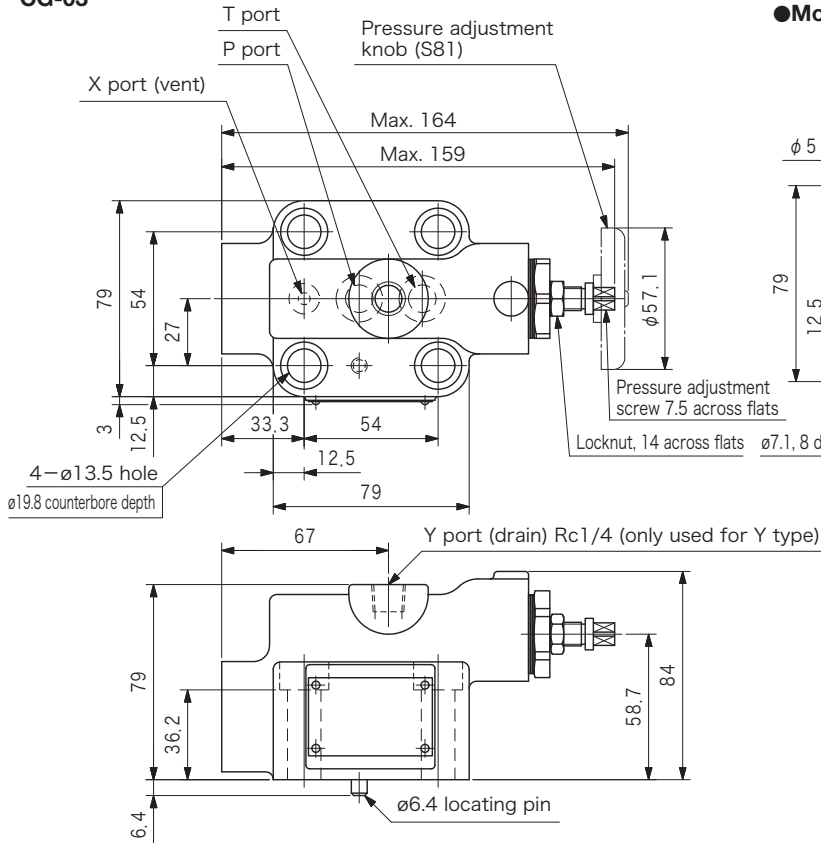
Subplate

Valve Model	Subplate	Connection Port Diameter Rc
CG-03	CGMT-03-10-JA-J	3/8

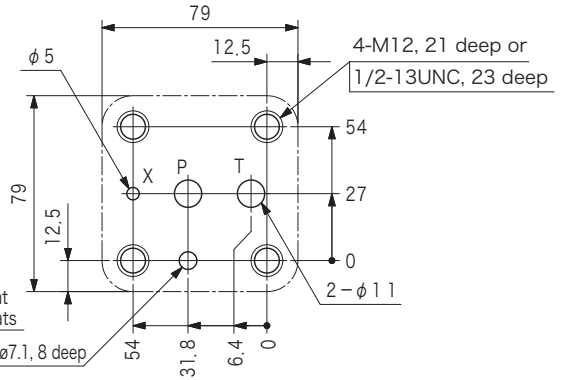
- Subplate must be ordered separately.
- Hex socket bolts for mounting valve included (unified thread).
- See page R6-2 for dimensions.

Dimensions

CG-03

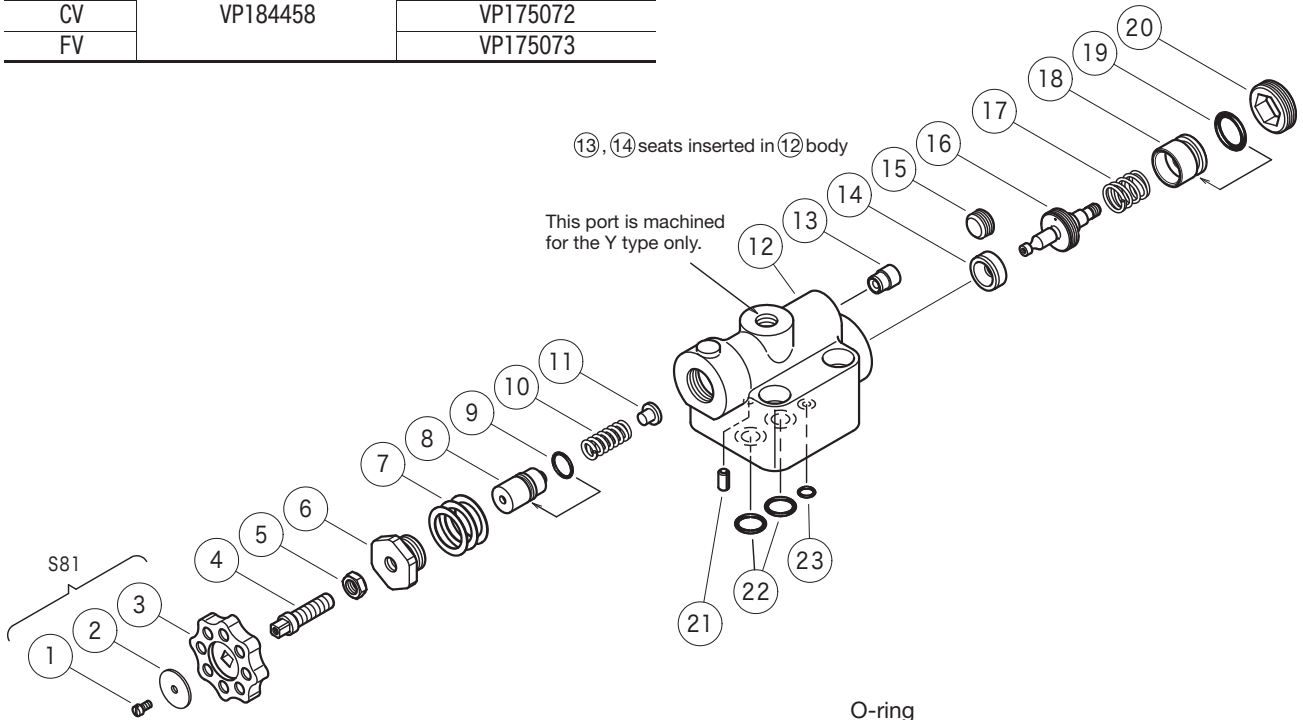


● Mounting dimensions



Spring

Code	⑰ Part No.	⑩ Part No.
B	VP175070	VP175071
C		VP175072
F		VP175073
BV	VP184458	VP175071
CV		VP175072
FV		VP175073



O-ring

No.	Part No.	Standard	Qty
9	007901517	AS568-015 (NBR, Hs70)	1
19	007921019	AS568-210 (NBR, Hs90)	1
22	007911319	AS568-113 (NBR, Hs90)	2
23	007901119	AS568-011 (NBR, Hs90)	1