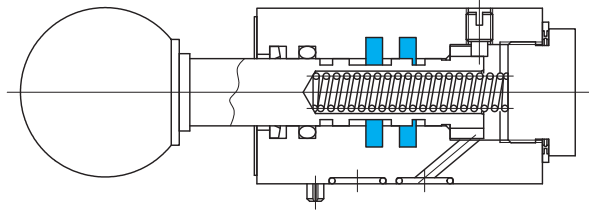
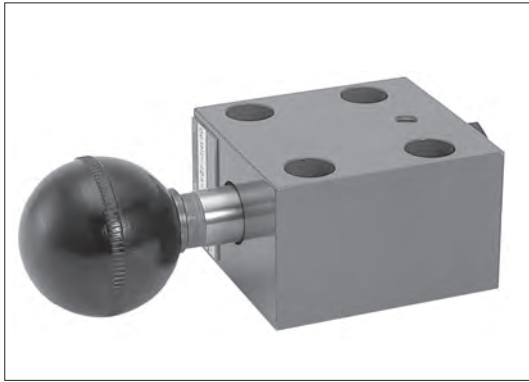


# Mechanically or manually operated directional control valves

## DG/T\*M2

E  
21-1

Directional Control Valves



### Functional Symbols

	Basic Symbol	Spool Types	External Drain Type	Internal Drain Type	Spool Types	External Drain Type	Internal Drain Type
Manually Operated	D*1M2	0			2		
Mechanically Operated	D*2M2	1			7		

### Model Code

(F3)-DG2M2-40A-(T)-30-JA-(J)

1 2 3 4 5 6 7 8

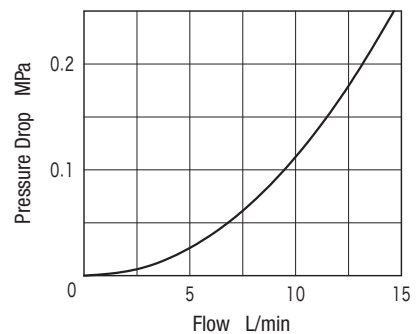
- 1 Hydraulic fluid  
Omit: mineral oil based fluid, water-glycol based fluid  
F3: Phosphate ester
- 2 Mechanically or manually operated directional control valve  
DG1M: Manual (push button) switching (gasket mounting)  
DT1M: Manual (push button) switching (threaded connection)  
DG2M: Mechanical switching (gasket mounting)  
DT2M: Mechanical switching (threaded connection)
- 3 Flow direction  
2: 2 way valve
- 4 Spool type  
Refer to "Functional Symbols".
- 5 Spool/spring arrangement  
A: Spring offset
- 6 Drain  
Omit: external drain  
T: Internal drain
- 7 Design no.  
10: DT\*M2  
30: DG\*M2
- 8 JIS pipe taper thread connection  
Use for DT\*M2

### Specifications

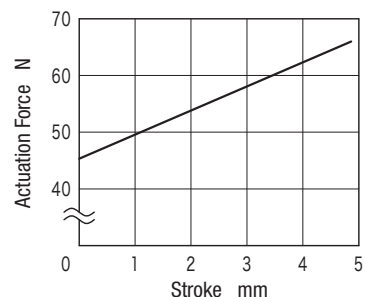
Model Code	Max. Working Pressure MPa	Rated Flow L/min	Allowable Y Port Back Pressure MPa	Actuation Force N	Weight Kg
DG1M2	14	13.5	0.35	See graph below	0.7
DT1M2					
DG2M2					
DT2M2					

Characteristics Curve (viscosity 20 mm<sup>2</sup>/s, specific gravity 0.87) (typical examples)

#### Pressure Drop Characteristics



#### Actuation Force



## Notes on Operation

- Spool will lock if manual type DG1M2, DT1M2 knob is depressed and rotated to right 90°. Switched condition will be maintained even if the hand is removed. Returning knob 90° and releasing knob will cause spring force to return valve to offset position.
- For mechanical actuation, design system so cam cannot be pushed beyond max. position.
- Roller orientation can be rotated 90°.
- For external drain type, connect A port directly to tank.

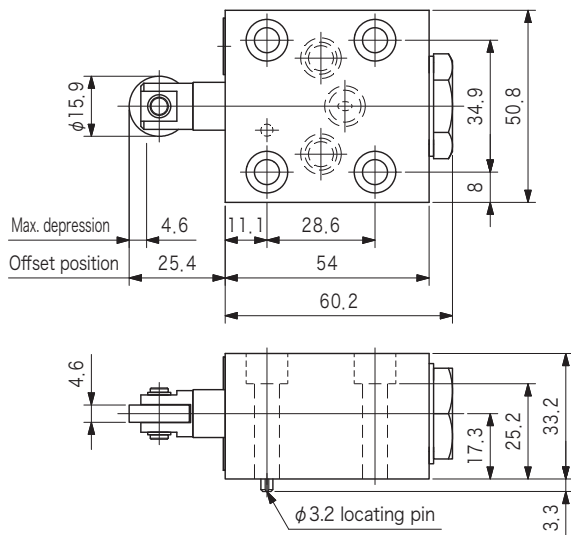
## Mounting Bolts (JIS B 1176, Strength Class 12.9)

Hex Socket Bolts		Qty
Metric Thread	Unified Thread	
M6 × 35	1/4-20UNC × 38.1	4

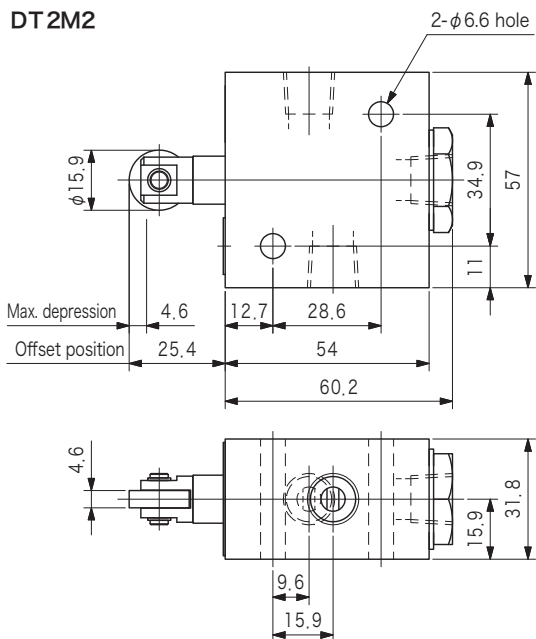
- Mounting bolts must be ordered separately.
- Tightening torque of mounting bolts: 8 to 10 N·m

## Dimensions

DG2M2



DT2M2

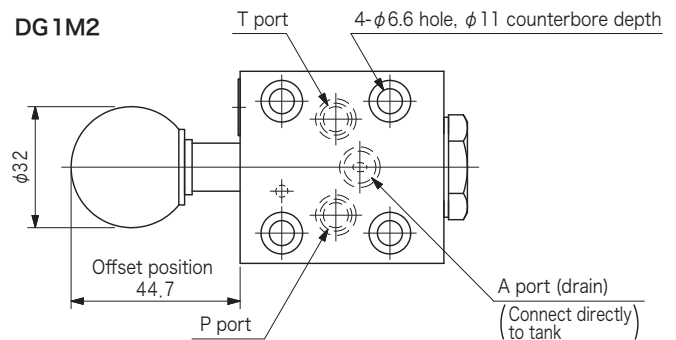


## Subplate

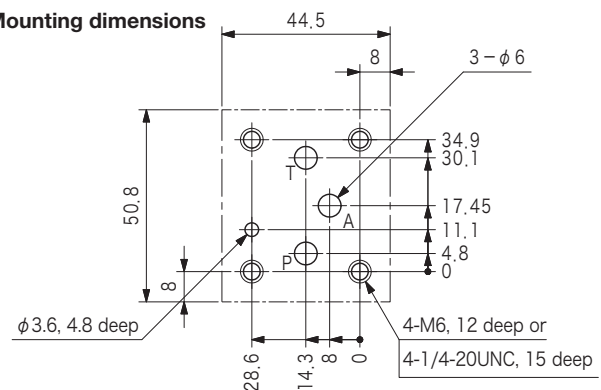
Valve Model/bolts	Subplate	Connection Port Dia. Rc	Mounting Bolts
DG*M2	Side Piping	DGME-02-JA-20-B-J	1/4
		DGME-03-JA-20-B-J	3/8
		DGME-02-JA-20-R-J	1/4
		DGME-03-JA-20-R-J	3/8
	Bottom Piping	DGM-02-JA-20-B-J	1/4
		DGM-03-JA-20-B-J	3/8
	DGM-02-JA-20-R-J	1/4	
	DGM-03-JA-20-R-J	3/8	

- Subplate must be ordered separately.
- Mounting bolts are not included. Mounting bolts must be ordered separately.
- See page R6-6 for dimensions.

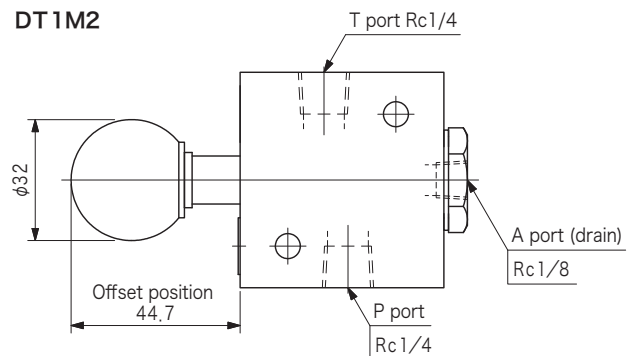
DG1M2

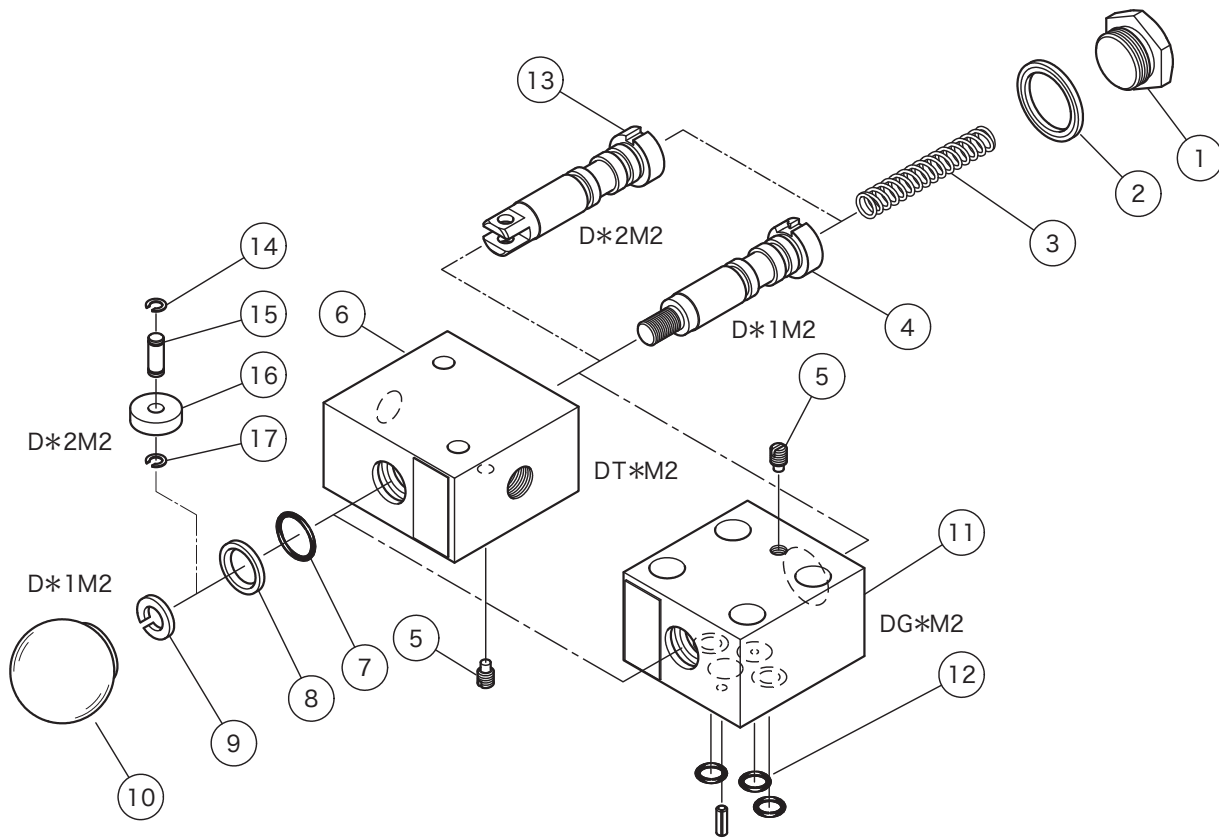


● Mounting dimensions



DT1M2





No.	Name	Part No.	Standard	Qty
2	Seal washer	40017160	_____	1
7	O-ring	007911217	AS568-112 (NBR, Hs70)	1
8	Seal wiper	VP530527	_____	1
12	O-ring	007901117	AS568-011 (NBR, Hs70)	3