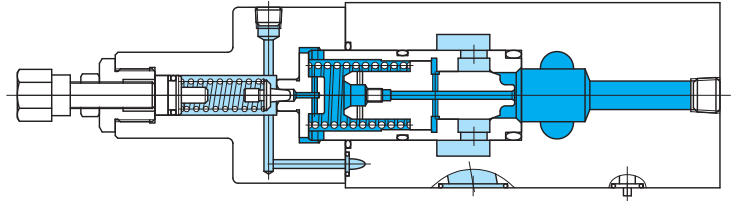
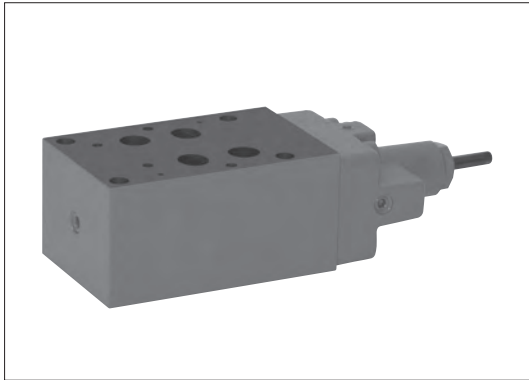
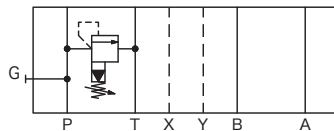


Pressure relief valves TGMC-7, 50 series



Functional Symbol

TGMC-7-PT



Model Code

TGMC-7-PT-*W-50

1 2 3 4 5 6

1 Relief valve

2 Mounting dimensions
7: ISO 4401-AD-07-4-A

3 Control line
PT: P → T relief

4 Pressure adjustment range

A: (0.7)~7 MPa

C: (0.7)~14 MPa

F: (0.7)~21 MPa

(The minimum pressure differs depending on the flow. Refer to the characteristics curves.)

5 Adjuster

W: hex socket adjustment screw

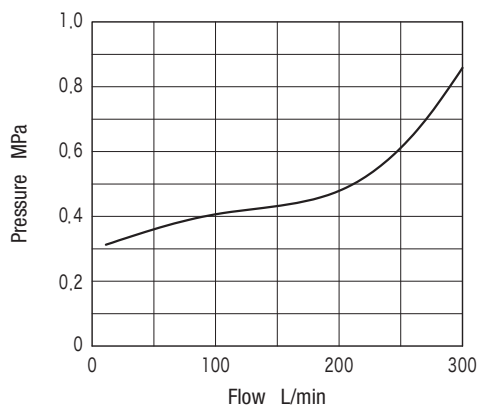
6 Design no.

Specifications

- Max. Working Pressure: 21 MPa
- Max. Flow: 300 L/min

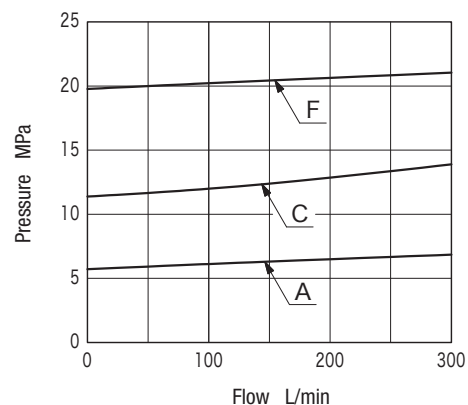
Characteristics Curve (at 32 mm²/s, 40°C) (typical examples)

■ Minimum Pressure Characteristics



- The back pressure of the tank is added to this value to obtain the minimum pressure in the system.

■ Pressure Override Characteristics



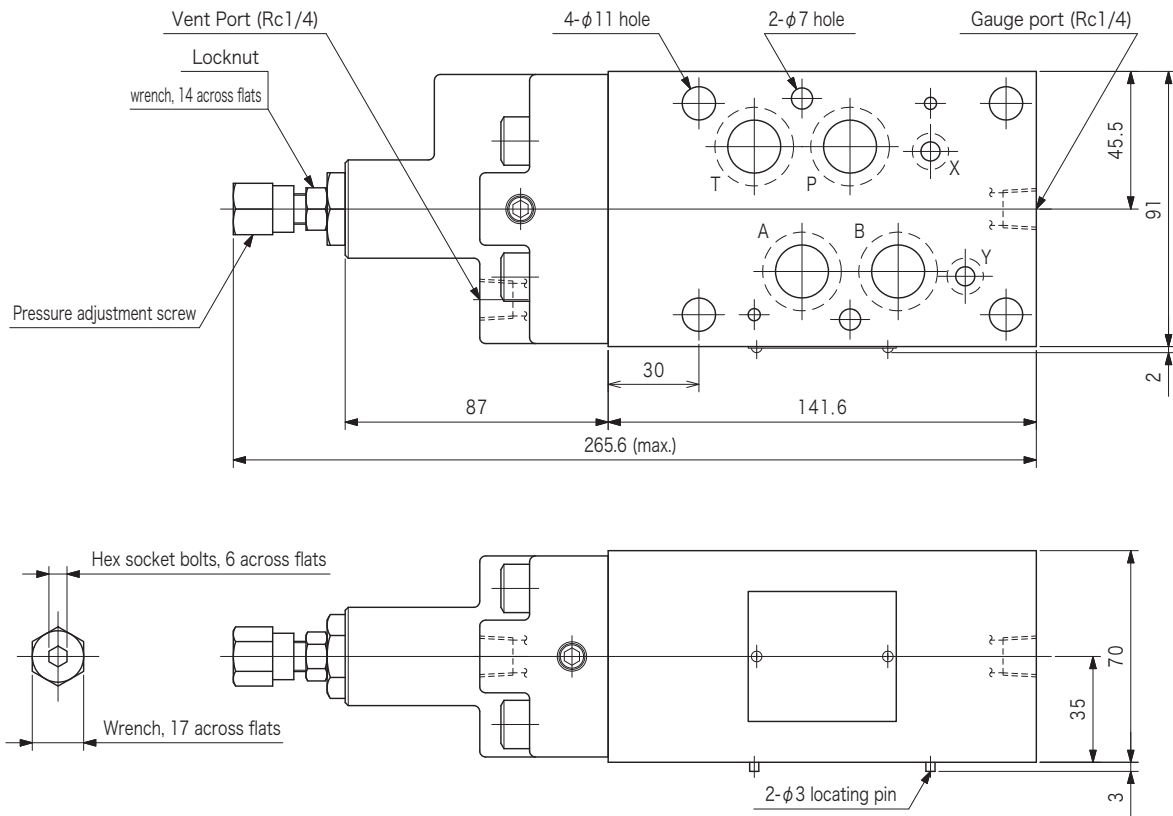
- Shown above is a typical example of a setting to the maximum pressure in the pressure adjustment range.
- The back pressure of the tank is added to these values to indicate the characteristics in the system.

TOKYO KEIKI INC.

Dimensions

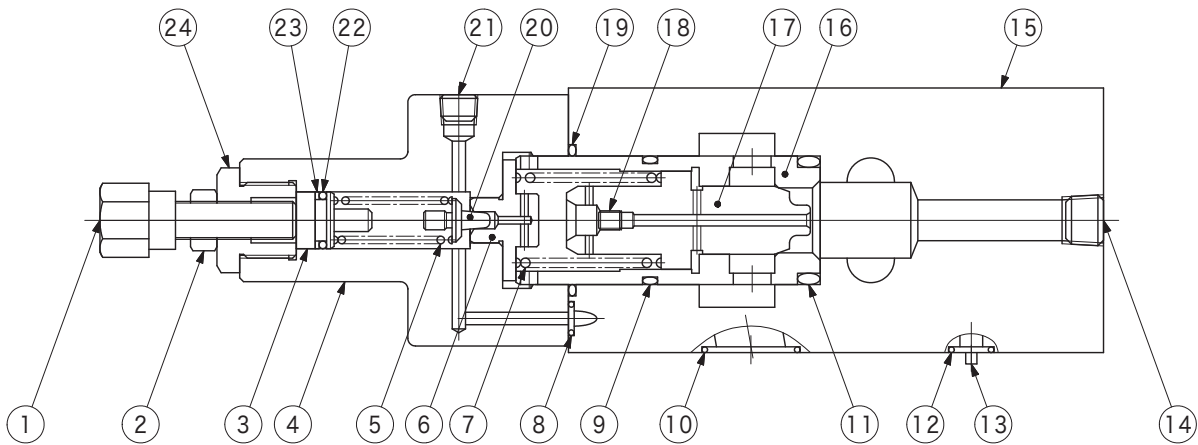
TGMC-7-PT-*W-50

Weight: 7.0 kg



Construction

TGMC-7-PT-*W-50



| No. | Name | Part No. | Standard | Qty |
|-----|-------------|-----------|-----------------------|-----|
| 8 | O-ring | - | JIS B 2401 1B-P6 | 1 |
| 9 | O-ring | 007912217 | AS568-122 (NBR, Hs70) | 1 |
| 10 | O-ring | 007911819 | AS568-118 (NBR, Hs90) | 4 |
| 11 | O-ring | - | JIS B 2401 1B-P28 | 1 |
| 12 | O-ring | 007901319 | AS568-013 (NBR, Hs90) | 2 |
| 19 | O-ring | 007912719 | AS568-127 (NBR, Hs90) | 1 |
| 22 | O-ring | - | JIS B 2401 1A-P11 | 1 |
| 23 | Backup ring | - | JIS B 2407 T2-P11 | 1 |