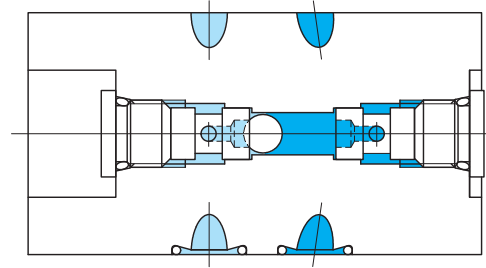
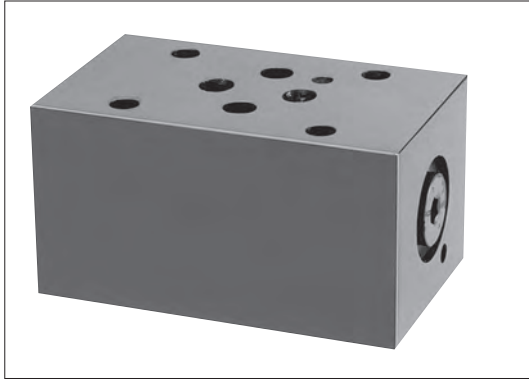
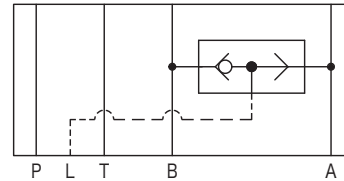


Shuttle valves TGMSH-3

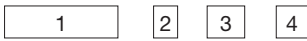


Functional Symbol



Model Code

TGMSH-3-AB-10



- 1 Shuttle valve modules
- 2 Mounting dimensions
3: equivalent to ISO 4401-03 (L port added)
- 3 Control line
AB: port A, B pressure selection
- 4 Design no.

Specifications

Model Code	Max. Working Pressure MPa	Max. Flow L/min	Weight kg
TGMSH-3	21	1	0.85

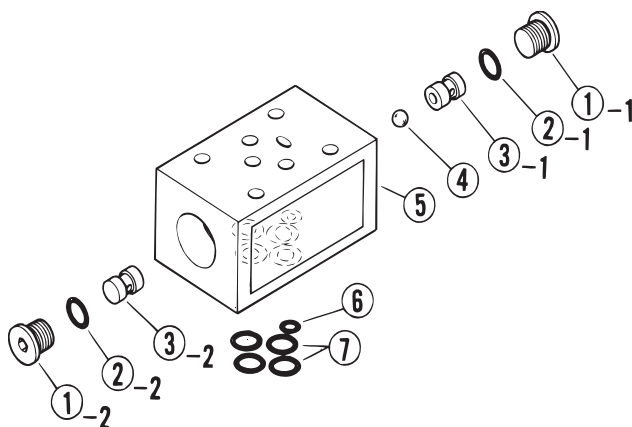
Mounting Bolts (JIS B 1176, Strength Class 12.9)

- These bolts are used when a directional and flow control valve (EPDG1-3 or D-DFG-01), shuttle valve (TGMSH-3) and pressure compensator valve (TGMHR-3 or TGMHX-3) are stacked, and used together.

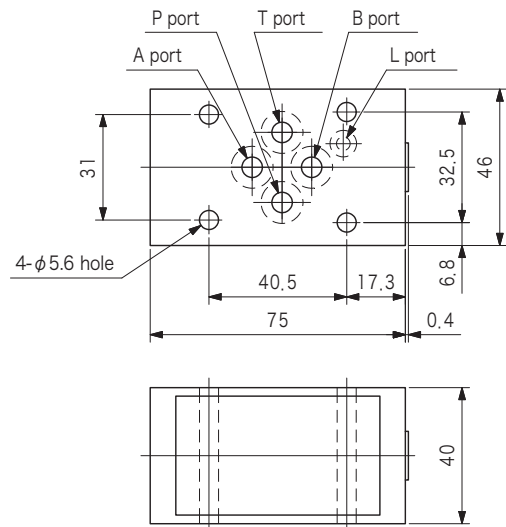
Hex Socket Bolts	Qty
M5 × 135	4

- Tightening torque of mounting bolts: 7 to 8 N·m

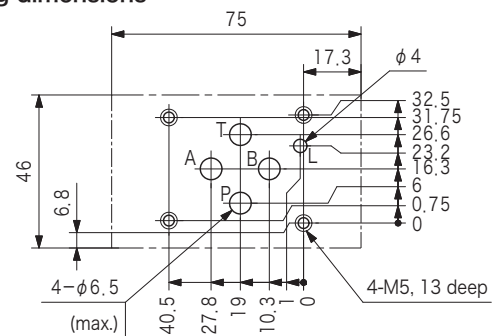
Construction



Dimensions



● Mounting dimensions



O-ring

No.	Part No.	Standard	Qty
2	007990419	AS568-904 (NBR, Hs90)	2
6	007900917	AS568-009 (NBR, Hs70)	1
7	007901217	AS568-012 (NBR, Hs70)	4